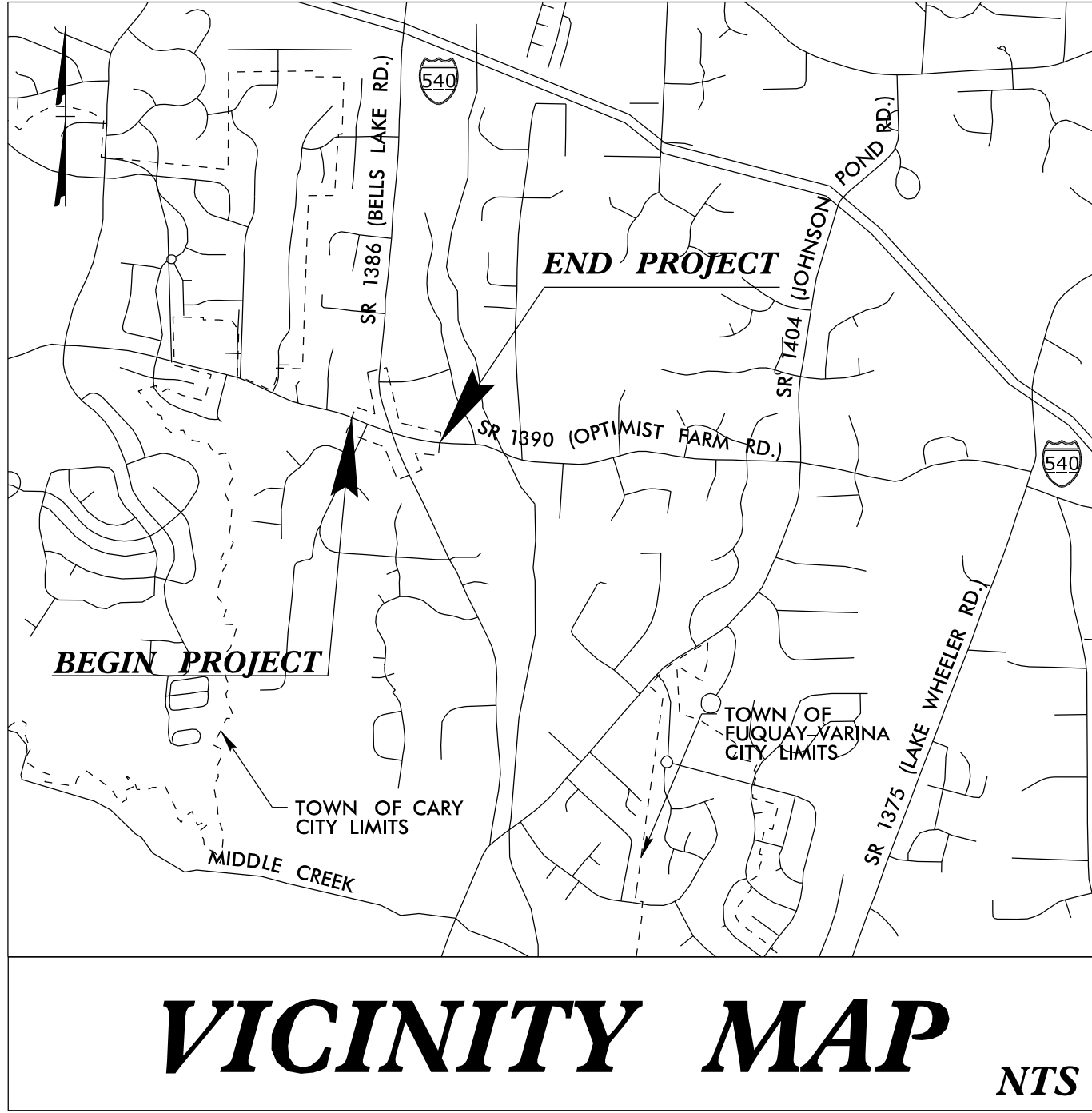


STATE	STATE PROJECT REFERENCE NO.	SHEET NO.	TOTAL SHEETS
N.C.	HL-0008Q	RW01	09

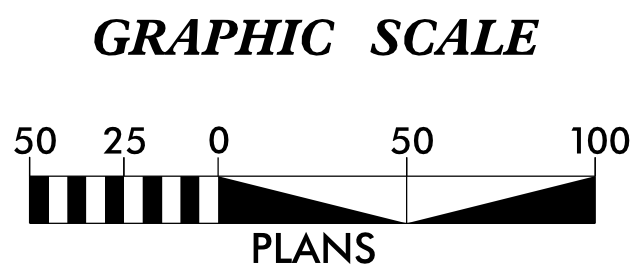
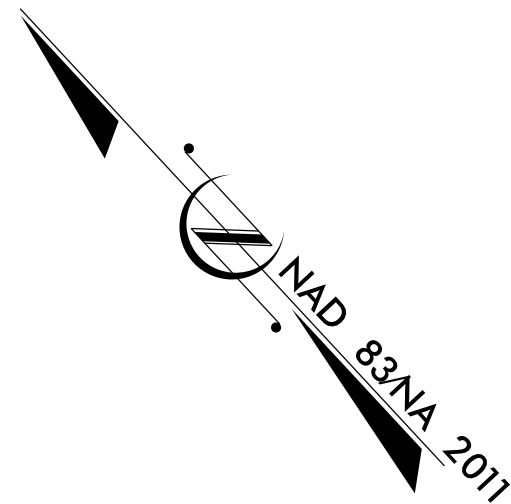
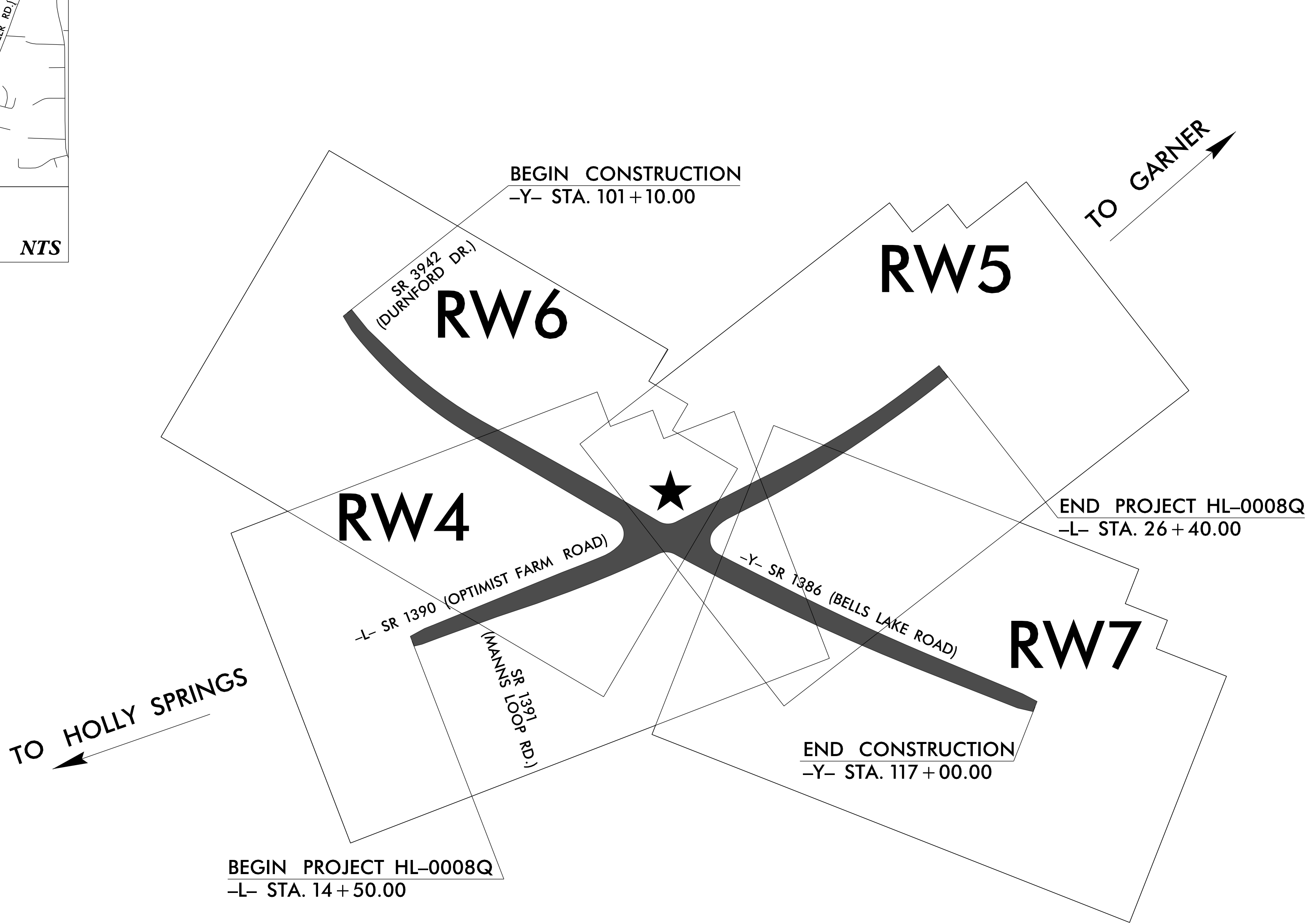
TIP PROJECT: HL-0008Q



STATE OF NORTH CAROLINA
DIVISION OF HIGHWAYS

SURVEY CONTROL, EXISTING CENTERLINES,
RIGHT OF WAY, EASEMENTS AND PROPERTY TIES

WAKE COUNTY



NOT TO SCALE

DATUM DESCRIPTION

THE LOCALIZED COORDINATE SYSTEM DEVELOPED FOR THIS PROJECT IS BASED ON THE STATE PLANE COORDINATES ESTABLISHED BY NCGS FOR MONUMENT "HL0008Q-1" WITH NAD 83/NA 2011 STATE PLANE GRID COORDINATES OF NORTHING: 695422.1308(ft) EASTING: 2074909.7800(ft) ELEVATION: 353.52(ft)

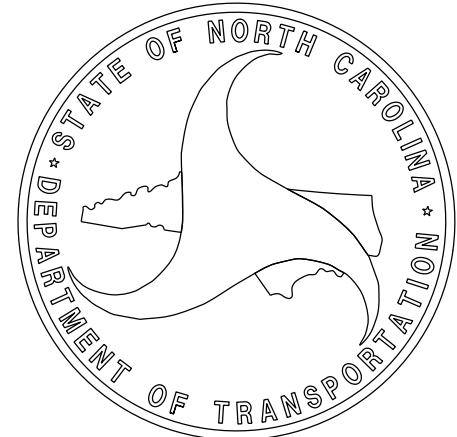
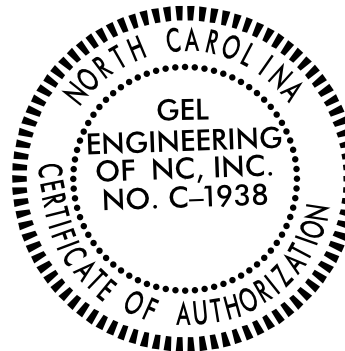
THE AVERAGE COMBINED GRID FACTOR USED ON THIS PROJECT (GROUND TO GRID) IS: 0.9998861948

THE N.C. LAMBERT GRID BEARING AND LOCALIZED HORIZONTAL GROUND DISTANCE FROM "HL0008Q-1" TO -L- STATION 10+00.00 IS N 71-28°27.6" W 132.25(ft)

ALL LINEAR DIMENSIONS ARE LOCALIZED HORIZONTAL DISTANCES VERTICAL DATUM USED IS NAVD 88

Prepared in the Office of:
GEL Engineering of NC, Inc. DBA
GEL SOLUTIONS
an Affiliate of THE GEL GROUP, INC.
2700 SUMNER BLVD.
SUITE 106
RALEIGH, NC 27616
(919) 544-1100
WWW.GEL-SOLUTIONS.COM

2024 STANDARD SPECIFICATIONS



SIGNATURE: _____ Date: _____